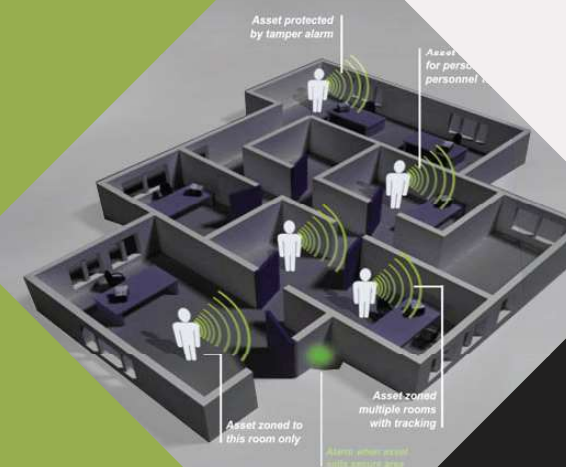




KLS

Kara Location System

Indoor Positioning Solution



contact us

Designed and manufactured
by KaraTrack Group 2015

www.klocs.ir

Fax: +98 214 420 8579

Sail: +98 912 257 2331

Integrating indoor positioning and
building management system

▼ Kara Track
Jalal Alahmad,
Misagh2, No.114
Tehran, Iran

zip:1463675591

info@klocs.ir

▲ KlocS Software

KLocS is the Graphical user interface to KLS. KLS includes several software modules each doing specified job in the system.

KLSLE is the location engine of the KLS which perform mathematical computations for converting sensor network data into locatin information.

KLSWatch is the Rule manager of the KLS.

RTLS APPLICATIONS

- **Heathcare**
- **Industerial Manufacturing**
- **Asset Management**
- **Militaly Training**
- **Access Control**
- **Performance Tuning**
- **Warehousing**
- **Yard and Parking**
- **Game Monitoring**

▲ Kara Location System

KLS is a positioning system for monitoring humans and assets locations in real time on indoor and outdoor applications.

KLS can integrate standard Building Management equipments to create interactive and automatic control of building resources.

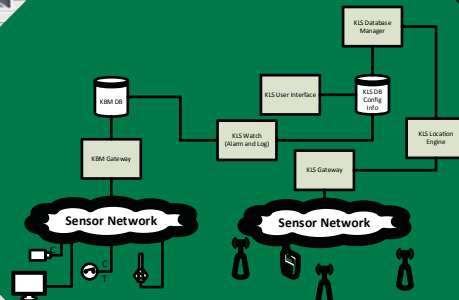
Rules and workflows allow the system to automatically catch every desired event and perform proper action.

The actions can be injected to infrastructures connected to KLS.

✓ High Accuracy

SOFTWARE FEATURES

- Graphic Map System
- Multilayer graphic
- Alarms by Audio, SMS, eMail...
- System event log
- Statistical reports
- Location history playback
- IP Camera streaming support
- Custom Rule on objects, locations and sensors
- Custom Workflows with real time status update
- Real time object and sensor status
- Web based access to map system (mobile devices)
- Automatic user security level check
- Histoy report of objects and locations



SYSTEM KEY FEATURES

- **High accuracy (up to 20cm)**
- **Wireless tag and anchor**
- **Graphical map system**
- **Custom Rule definition**
- **Custom Workflow definition**
- **Long tag battery life**
- **BMS integration**
- **IP Camera support**
- **Tag attachment to sensors**

TECHNICAL SPECIFICATIONS

- **UWB technology**
- **Wireless backbone network**
- **Anchor power: 5VDC, 200mA**
- **Anchor range up to 100m**
- **Tag Battery life: 5 up to months**
- **Tag attachment Interface: USB, UART**
- **SQL Server database**
- **Backup battery for 16 hours work**
- **KNX bus support for BMS integration**

